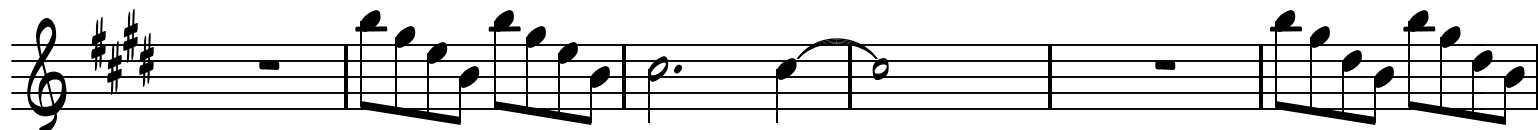
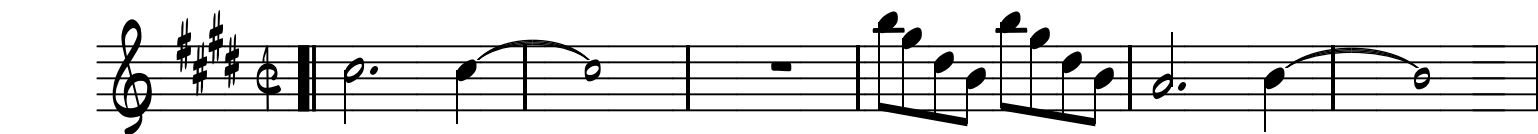


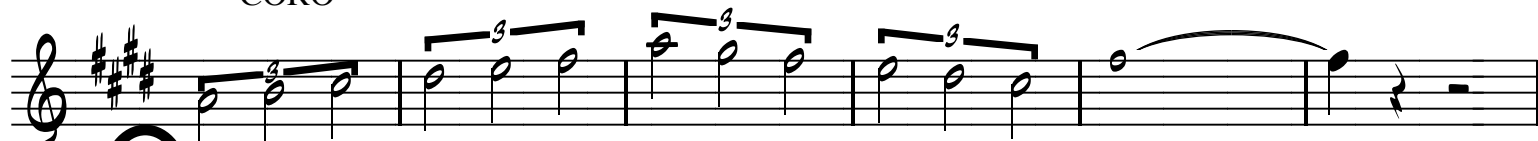
BEBO HOY, BEBO MANANA

SAX-A

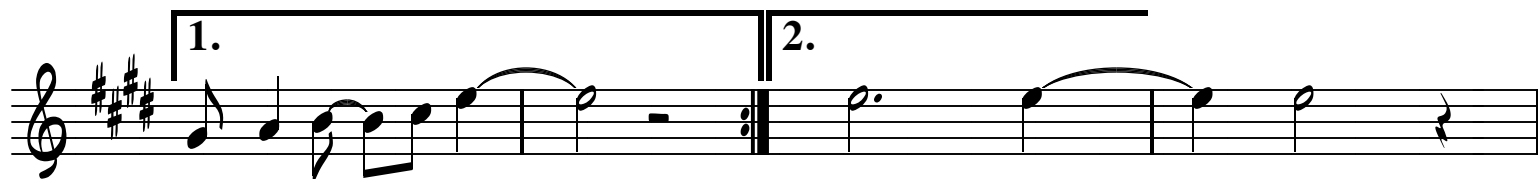
ARREGLO:
CHUCKY ACOSTA



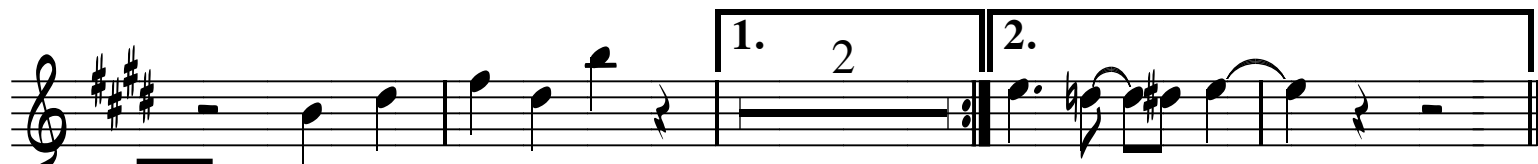
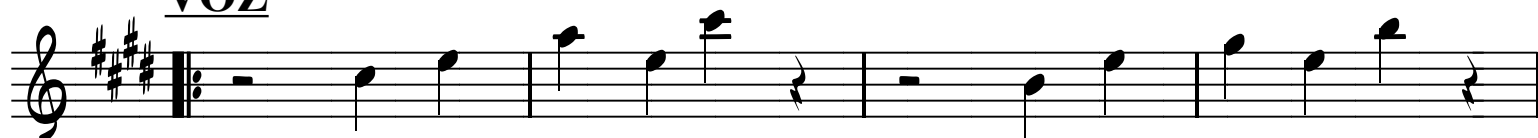
CORO



CORO



VOZ



A

**AL CORO
Y SEGUIR**



2 BEBO HOY, BEBO MANANA SX-A

4XS **MAMBO**



TPTS



4XS



TPTS



TACET LAST TIME



AL  Y SEGUIR



3 BEBO HOY, BEBO MANANA SX-A

CORO

8

A musical staff in treble clef with a key signature of three sharps (F#, C#, G#). The staff contains a single whole rest that spans the entire 8-measure duration of the section.

TPTS

A musical staff in treble clef with a key signature of three sharps. It contains a melodic line starting with a quarter rest, followed by eighth notes: G4, A4, B4, C5, B4, A4, G4. The staff ends with a double bar line and repeat dots.

A musical staff in treble clef with a key signature of three sharps. It contains a melodic line starting with a quarter rest, followed by eighth notes: G4, A4, B4, C5, B4, A4, G4. The staff ends with a double bar line and repeat dots.

CORO

8

A musical staff in treble clef with a key signature of three sharps. The staff contains a single whole rest that spans the entire 8-measure duration of the section.

TPTS

A musical staff in treble clef with a key signature of three sharps. It contains a melodic line starting with a quarter rest, followed by eighth notes: G4, A4, B4, C5, B4, A4, G4. The staff ends with a double bar line and repeat dots.

A musical staff in treble clef with a key signature of three sharps. It contains a melodic line starting with a quarter rest, followed by eighth notes: G4, A4, B4, C5, B4, A4, G4. The staff ends with a double bar line and repeat dots.

CORO

A musical staff in treble clef with a key signature of three sharps. It contains a melodic line starting with a quarter rest, followed by eighth notes: G4, A4, B4, C5, B4, A4, G4. The staff ends with a double bar line and repeat dots.

A musical staff in treble clef with a key signature of three sharps. It contains a melodic line starting with a quarter rest, followed by eighth notes: G4, A4, B4, C5, B4, A4, G4. The staff ends with a double bar line and repeat dots.

A musical staff in treble clef with a key signature of three sharps. It contains a melodic line starting with a quarter rest, followed by eighth notes: G4, A4, B4, C5, B4, A4, G4. The staff ends with a double bar line and repeat dots.

A musical staff in treble clef with a key signature of three sharps. It contains a melodic line starting with a quarter rest, followed by eighth notes: G4, A4, B4, C5, B4, A4, G4. The staff ends with a double bar line and repeat dots.

Fine